

17-18 SEPTEMBER 2015

SPATIAL ANALYSIS

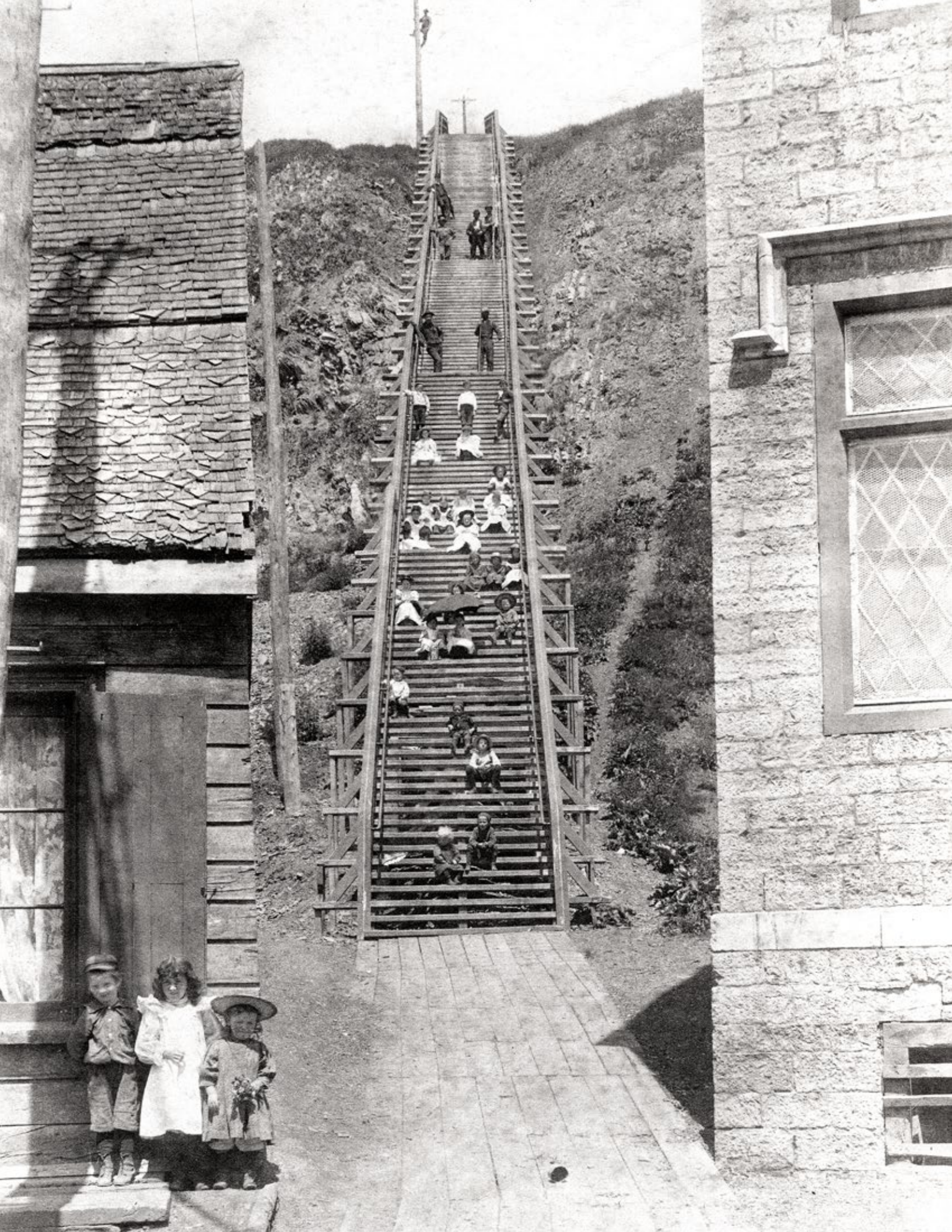
in Historical Demography

Micro and macro approaches

Université du Québec, 475 rue du Parvis, Québec,
Salle du Conseil (room 2410)



Source iconographique: Escalier du Cap-Blanc, Québec, vers 1895. Philippe Gingras. BANQ-Qc, P585,D14,P12.



Organized by the **IUSSP Scientific Panel on Historical Demography** in collaboration with the Université du Québec à Chicoutimi with support from the Centre interuniversitaire d'études québécoises (CIEQ) and the Université de Genève.

17-18 SEPTEMBER 2015

SPATIAL ANALYSIS

in Historical Demography

Micro and macro approaches

Université du Québec, 475 rue du Parvis, Québec,
Salle du Conseil (room 2410)

SCIENTIFIC COMMITTEE

Martin Dribe (University of Lund)

Don Lafreniere (Michigan Technological University)

Diego Ramiro Fariñas (Spanish Council for Scientific Research)

Hélène Vézina (Université du Québec à Chicoutimi)

LOCAL ORGANIZER

Hélène Vézina (Université du Québec à Chicoutimi)

hvezina@uqac.ca



PROGRAMME

THURSDAY 17 SEPTEMBER

8h45-09h00. **Opening by the scientific committee**
Welcome address by Lyne Sauvageau, vice-présidente à l'enseignement
et à la recherche, Université du Québec

9h00-10h30. **The Micro Space of Life in the City**

Chair: **Diego Ramiro Fariñas**

Exploring urban time-spaces, a perspective from nineteenth-century Montreal.

Sherry Olson (McGill University, Montreal, Canada)

*Footwear Workers in Québec City: A Spatial Analysis of Familial
and Social Reproduction in 1911.*

Marie-Eve Harton (Université Laval, Québec, Canada)

Richard Marcoux (Université Laval, Québec, Canada)

Laurent Richard (Université Laval, Québec, Canada)

10h30-11h00. Break

11h00-12h30. **The Micro Space of Life in the City** (continued)

Chair: **Diego Ramiro Fariñas**

Socio-Spatial Mobility and Urban Environments in the 19th Century City

Don Lafreniere (Michigan Technological University, United States)

Jason Gilliland (University of Western Ontario, Canada)

Marrying upward or downward: intra-urban marriage fields in Quebec City, 1871-1901

Marc St-Hilaire (Université Laval, Québec, Canada)

12h30-13h30. Lunch

13h30-15h00. **Disentangling Spatial and Social Effects**

Chair: **Don Lafreniere**

*Spatial vs. social distance in the diffusion of fertility decline:
Evidence from Sweden 1880-1900*

Martin Dribe (Lund University, Sweden)

Sebastian Klüsener (Max Planck Institute for Demographic Research)

Francesco Scalone (University of Bologna)

*Distinguishing Family and Location Effects upon Wealth:
A Longitudinal Study of the U.S. North 1850 to 1870*

Alice Bee Kasakoff (University of South Carolina, United States)

Andrew B Lawson (Medical University of South Carolina, United States)

Purbasha Dasgupta (University of South Carolina, United States)

Michael DuBois (University of South Carolina, United States)

15h00-15h15. Break

15h15-16h45. **Household and Residential Patterns**

Chair: **Don Lafreniere**

*Leaving Home in Nineteenth-Century England and Wales:
Individual and Household Strategies*

Joseph Day (University of Cambridge, United Kingdom)

*Residential Segregation in the Postbellum Southern Cities:
The Case of Washington, DC*

John R. Logan (Brown University, United States)

16h45-17h00. Discussion on publication plans

19h00. Reception dinner. Restaurant Le Cercle, 228 rue St-Joseph est

FRIDAY 18 SEPTEMBER

08h30-10h00. **Modelling Mortality and Morbidity**

Chair: **Martin Dribe**

Spatial modelling of rural infant mortality in nineteenth-century Britain

Paul Atkinson (Lancaster University, United Kingdom)

Ian Gregory (Lancaster University, United Kingdom)

Brian Francis (Lancaster University, United Kingdom)

Catherine Porter (Lancaster University, United Kingdom)

The influence of micro-level soil factors on mortality in southern Sweden, 1850-1914

Finn Hedefalk (Lund University, Sweden)

Luciana Quaranta (Lund University, Sweden)

Tommy Bengtsson (Lund University, Sweden)

10h00-10h30. Break

10h30-12h00. **Modelling Mortality and Morbidity** (continued)

Chair: **Martin Dribe**

A fresh map of death: Venice 1854

Christina Munno (Université catholique de Louvain, Belgium)

Renzo Derosas (Università Ca' Foscari, Venezia, Italy)

The Spatial distribution of infectious disease in Madrid in early XXth Century.

Diego Ramiro Fariñas (Consejo Superior de Investigaciones Científicas, Madrid, Spain)

Isabel del Bosque González (Consejo Superior de Investigaciones Científicas, Madrid, Spain)

Sara García Ferrero (Consejo Superior de Investigaciones Científicas, Madrid, Spain)

Yolanda Casado (Consejo Superior de Investigaciones Científicas, Madrid, Spain)

Lourdes Martín-Forero (Consejo Superior de Investigaciones Científicas, Madrid, Spain)

Rocío Gutiérrez (Consejo Superior de Investigaciones Científicas, Spain)

12h00-13h00. Lunch

13h00-14h30. **Population, Migration and Movement at the Macro-Scale**

Chair: **Danielle Gauvreau**

Spatial Patterns of Changes in Economic Activity, Population and Labor Force in the US, 1970 to 2012: A First Look Using the County Business Patterns, Decennial Census, and the American Community Survey

Andrew Beveridge (Queens College, City University of New York, United States)

Daniel Patrick Miller (Queens College, City University of New York, United States)

Mining Microdata: Economic Opportunity and Spatial Mobility in Britain and the United States, 1850-1881

Evan Roberts (University of Minnesota, United States)

Peter Baskerville (University of Alberta, Canada)

Lisa Dillon (University of Montréal, Canada)

Kris Inwood (University of Guelph, Canada)

Steven Ruggles (University of Minnesota, United States)

Kevin Schürer (University of Leicester, United Kingdom)

John Robert Warren (University of Minnesota, United States)

14h30-14h45. Break

14h45-16.15. **Population, Migration and Movement at the Macro-Scale**
(continued)

Chair: **Hélène Vézina**

Which transition comes first? Urban and demographic transitions in comparative perspective.

Philippe Bocquier (Université Catholique de Louvain, Belgium)

Rafael Costa (Vrije Universiteit Brussel, Belgium)

Visualizing movement with spider diagrams: Migration to major urban centers in the late 19th century North Atlantic countries

Sula Sarkar (Minnesota Population Center, University of Minnesota)

16h15-16h45. Concluding Remarks by **Stephen A. Matthews** (Penn State University and chair of the Scientific Panel on Spatial Demography of the IUSSP)

16h45-17h00. Closing by the scientific committee

LIST OF PARTICIPANTS

Paul Atkinson

(Lancaster University, United Kingdom)

Peter Baskerville

(University of Alberta, Canada)

Tommy Bengtsson

(Lund University, Sweden)

Andrew Beveridge

(Queens College, City University of New York, United States)

Philippe Bocquier

(Université Catholique de Louvain, Belgium)

Yolanda Casado

(Consejo Superior de Investigaciones Científicas, Madrid, Spain)

Rafael Costa

(Vrije Universiteit Brussel, Belgium)

Purbasha Dasgupta

(University of South Carolina, United States)

Joseph Day

(University of Cambridge, United Kingdom)

Isabel del Bosque González

(Consejo Superior de Investigaciones Científicas, Madrid, Spain)

Renzo Derosas

(Università Ca' Foscari, Venezia, Italy)

Lisa Dillon

(University of Montréal, Canada)

Martin Dribe

(Lund University, Sweden)

Michael DuBois

(University of South Carolina, United States)

Brian Francis

(Lancaster University, United Kingdom)

Sara García Ferrero

(Consejo Superior de Investigaciones Científicas, Madrid, Spain)

Danielle Gauvreau

(Concordia University, Montreal, Canada)

Jason Gilliland

(University of Western Ontario, Canada)

Ian Gregory

(Lancaster University, United Kingdom)

Rocío Gutiérrez

(Consejo Superior de Investigaciones Científicas, Spain)

Marie-Eve Harton

(Université Laval, Québec, Canada)

Finn Hedefalk

(Lund University, Sweden)

Kris Inwood

(University of Guelph, Canada)

Alice Bee Kasakoff

(University of South Carolina, United States)

Sebastian Klüsener

(Max Planck Institute for Demographic Research, Germany)

Don Lafreniere

(Michigan Technological University, United States)

Andrew B Lawson

(Medical University of South Carolina, United States)

John R. Logan

(Brown University, United States)

Richard Marcoux

(Université Laval, Québec, Canada)

Lourdes Martín-Forero

(Consejo Superior de Investigaciones Científicas, Madrid, Spain)

Stephen A. Matthews

(Penn State University, United States)

Daniel Patrick Miller

(Queens College, City University of New York, United States)

Christina Munno

(Université catholique de Louvain, Belgium)

Sherry Olson

(McGill University, Montreal, Canada)

Catherine Porter

(Lancaster University, United Kingdom)

Luciana Quaranta

(Lund University, Sweden)

Diego Ramiro Fariñas

(Consejo Superior de Investigaciones Científicas, Madrid, Spain)

Laurent Richard

(Université Laval, Québec, Canada)

Evan Roberts

(University of Minnesota, United States)

Steven Ruggles

(University of Minnesota, United States)

Sula Sarkar

(University of Minnesota, United States)

Francesco Scalone

(University of Bologna, Italy)

Kevin Schürer

(University of Leicester, United Kingdom)

Marc St-Hilaire

(Université Laval, Québec, Canada)

Hélène Vézina

(Université du Québec à Chicoutimi, Canada)

John Robert Warren

(University of Minnesota, United States)



VISITEZ NOTRE SITE WEB
www.cieq.ca



CIEQ

Centre interuniversitaire d'études québécoises

Un lieu de formation, d'échanges intellectuels
et d'interdisciplinarité

Le **CIEQ** s'intéresse au changement socioculturel au Québec, appréhendé dans ses dimensions spatiales et temporelles, depuis la colonisation française jusqu'à nos jours. Les travaux du CIEQ se regroupent autour de trois axes de recherche: **1 les populations et leurs milieux de vie: 2 les institutions et les mouvements sociaux: 3 la culture québécoise: diversité, échanges et transmission.**

ciéq Centre
interuniversitaire
d'études québécoises

Présent à l'Université du Québec à Trois-Rivières
et à l'Université Laval, le CIEQ est un regroupement
stratégique reconnu par le FRQSC.

